

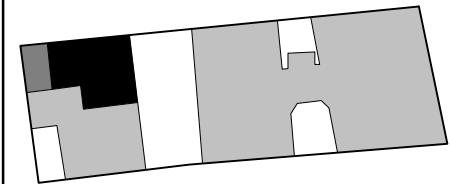
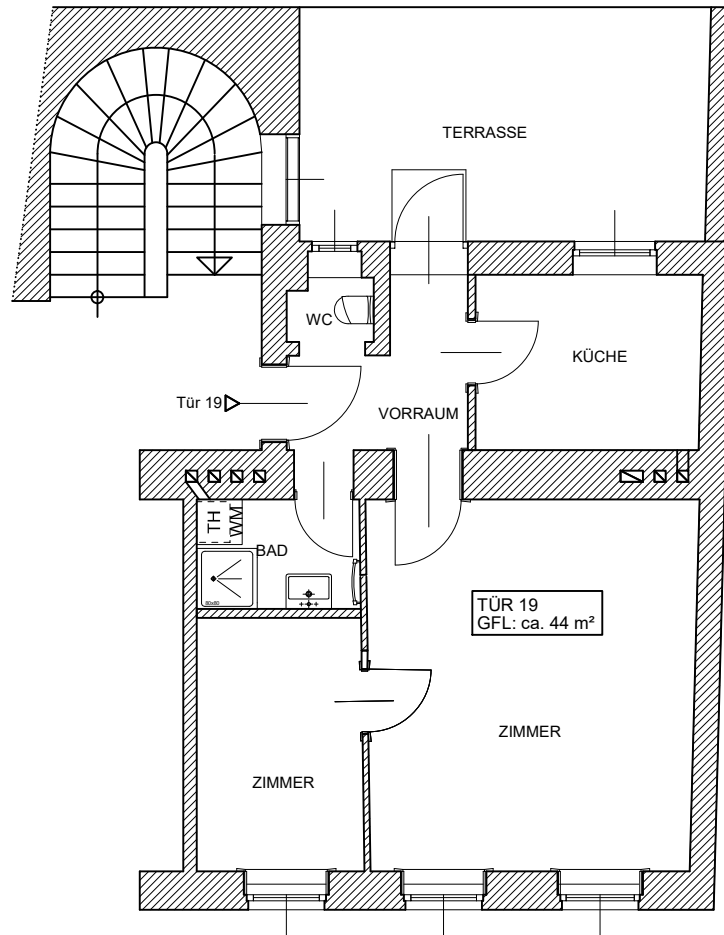
1090 WIEN

LIECHTENSTEINSTRASSE 107

PARTERRE

TÜR 19

GFL. = ca. 44 m²
TER. = ca. 17 m²



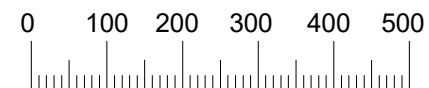
SANTNER
IMMOBILIENBERATUNG GmbH

Technisches Büro- Ingenieurbüro



Hütteldorferstraße 52 1150 Wien

Tel.: +43 (1) 789 01 01 santner@santner.at



gez.: SB